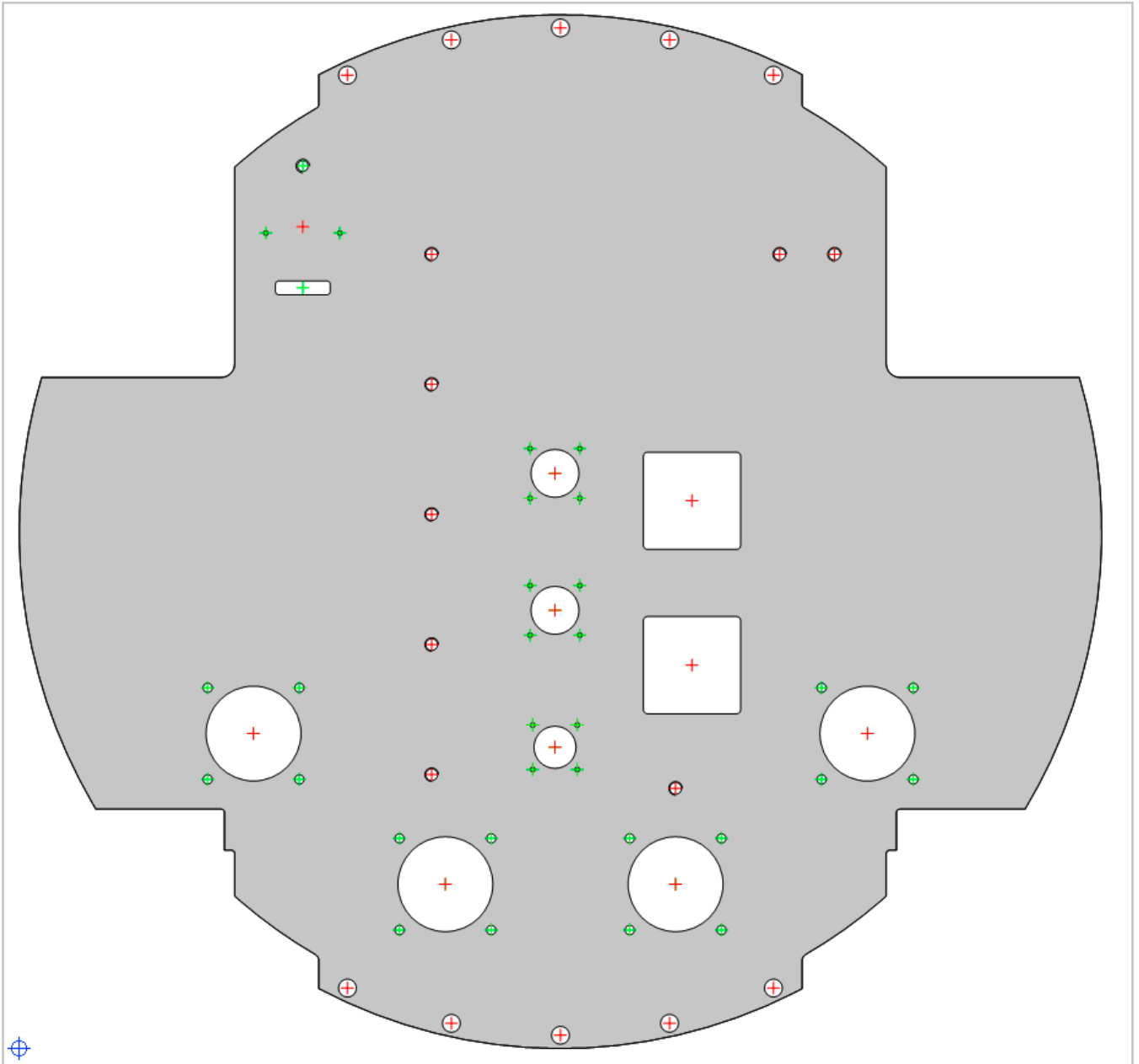


**STEP BY STEP
DXF IMPORT GUIDE**

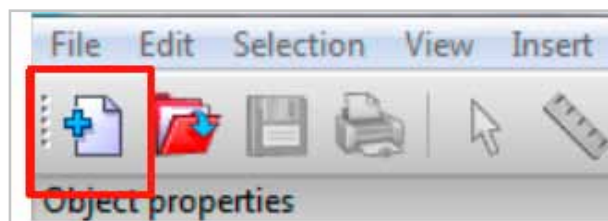


DXF IMPORT GUIDE

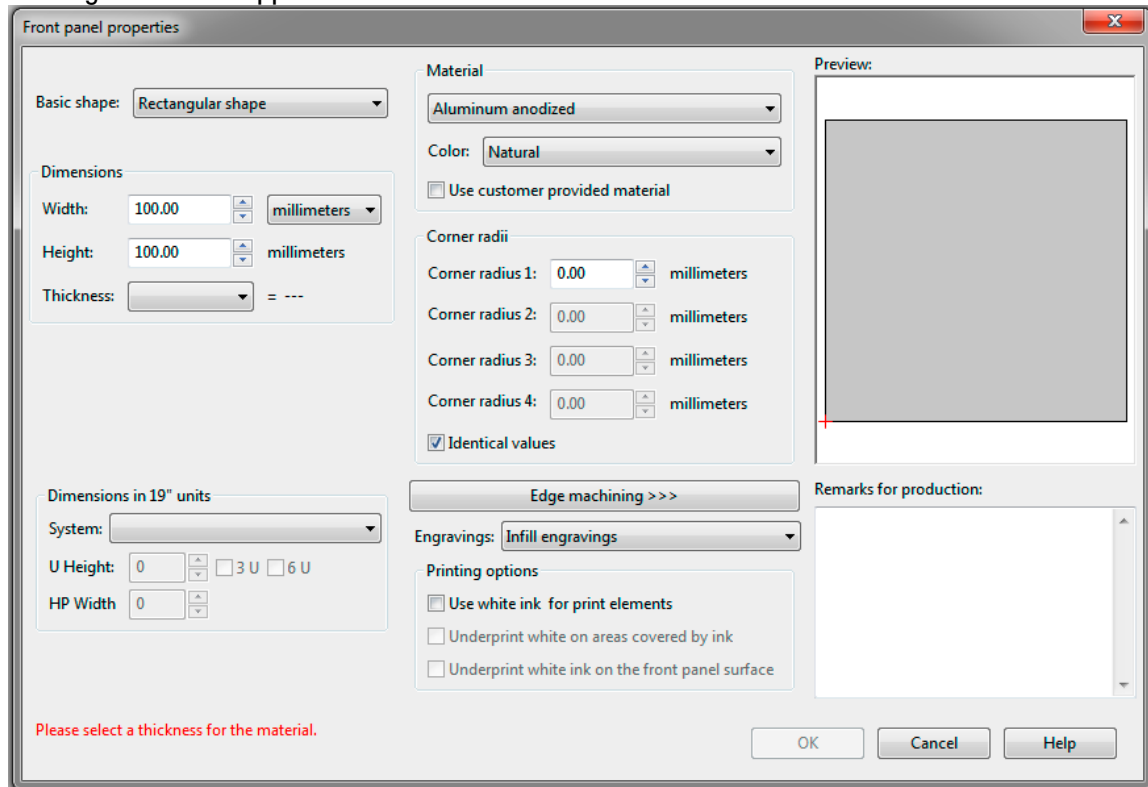
This is a step by step guide showing how to import a DXF panel shape and how to import DXF cutouts onto the panel. When importing DXF files you must use two separate files; one for the panel shape and one for the cutouts/engravings. Below is the end result panel that we will be showing an import for:



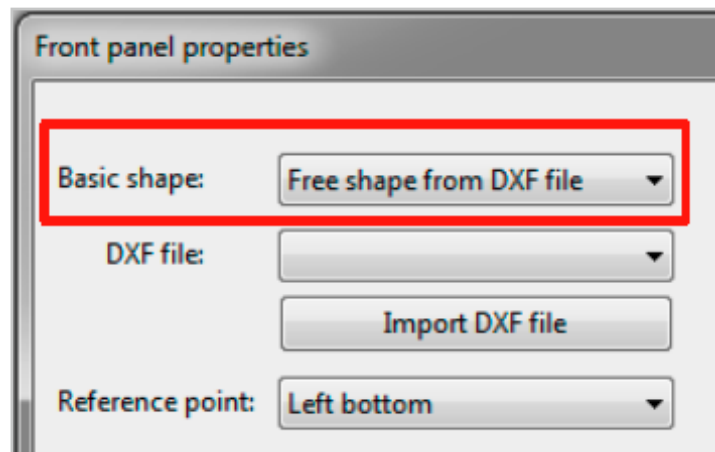
1) Start by clicking the Create ,New Front Panel' button in the top left corner of the screen:



2) The following screen will appear:

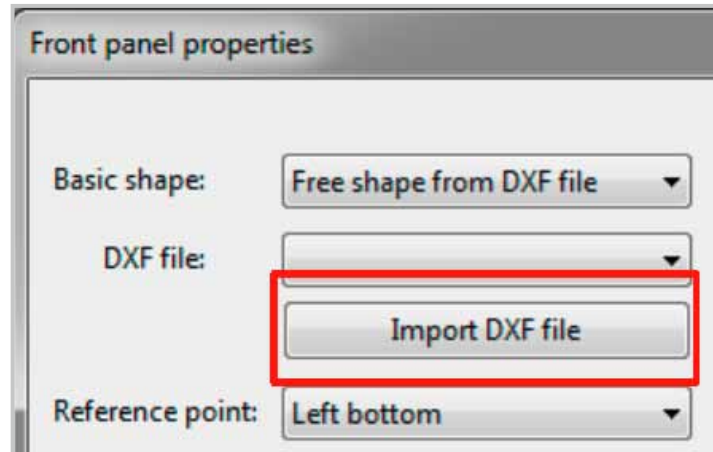


3) Under ,Basic Shape' select ,Free Shape From DXF File':

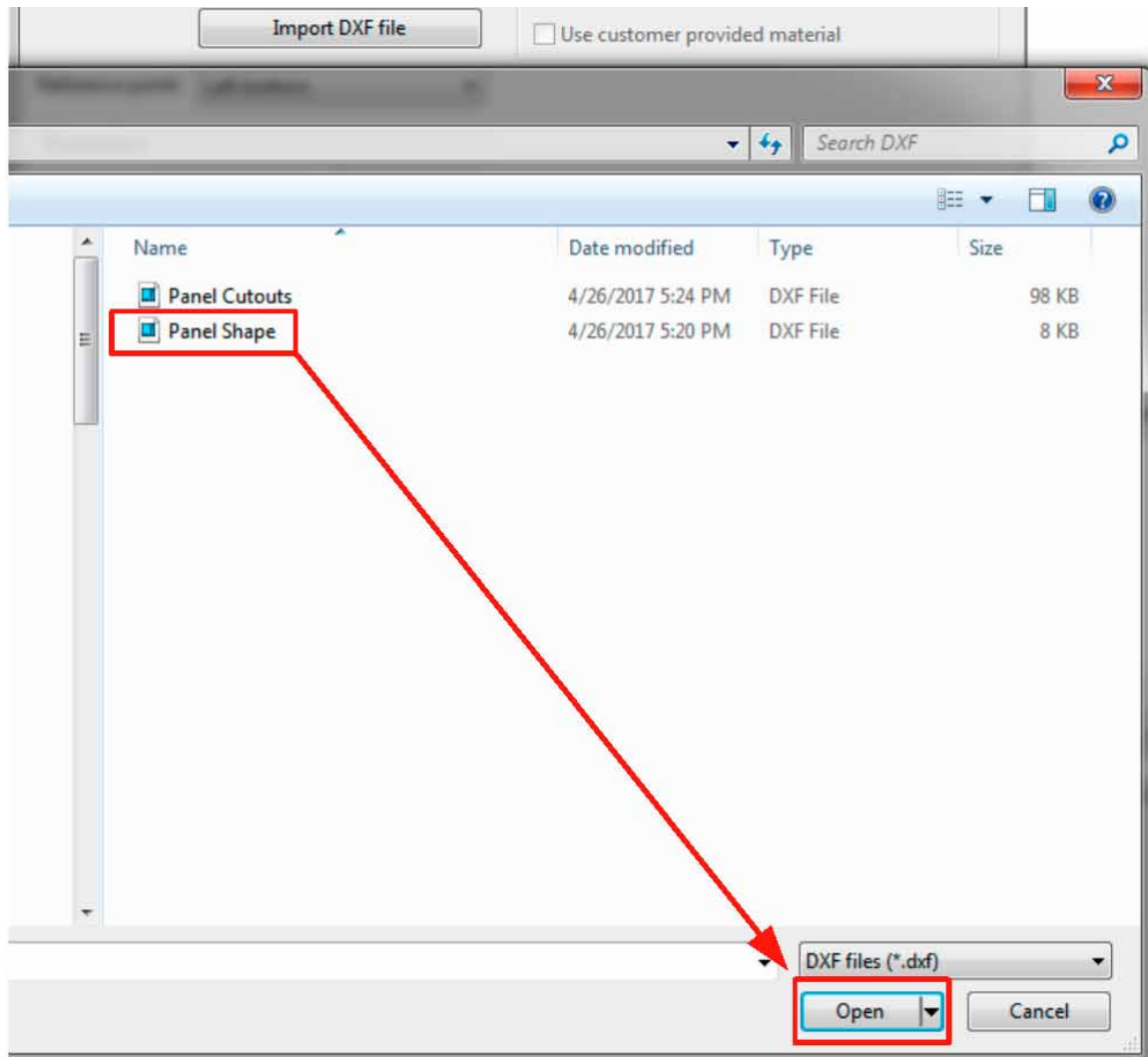


DXF IMPORT GUIDE

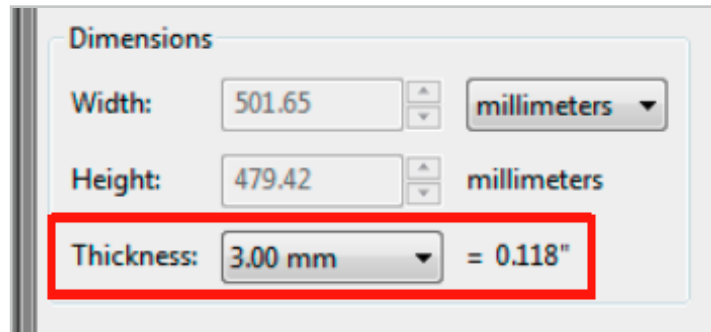
4) Click ,Import DXF File' button



5) Select the desired DXF File and click ,Open':



6) Select your material ,Thickness':



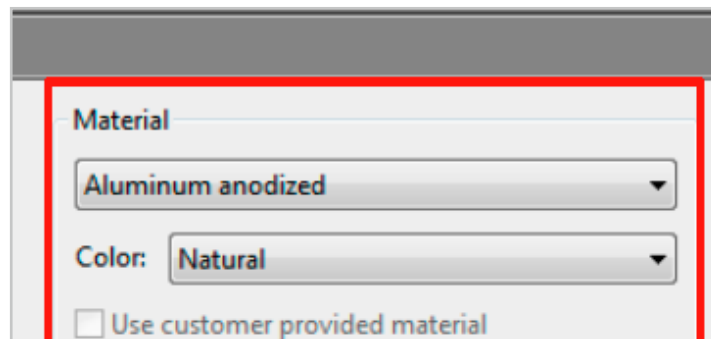
Dimensions

Width: 501.65 millimeters

Height: 479.42 millimeters

Thickness: 3.00 mm = 0.118"

7) Select the type of material that is wanted and the color:



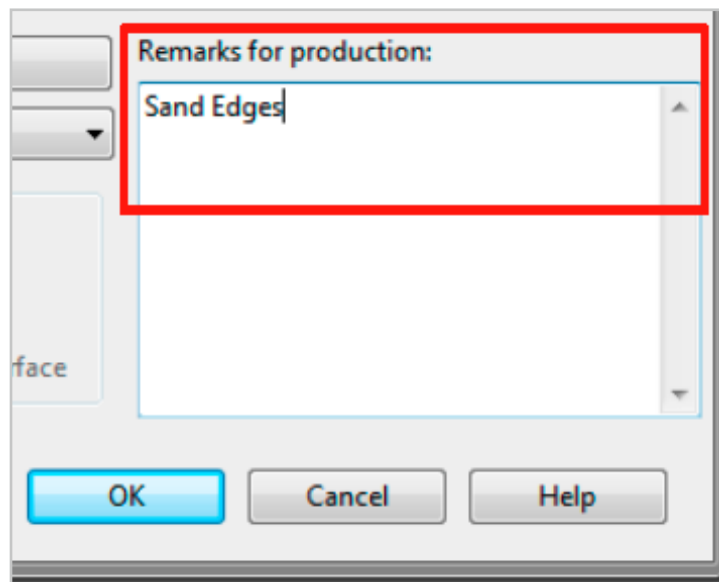
Material

Aluminum anodized

Color: Natural

Use customer provided material

8) In the ,Remarks for production' section leave any notes needed for production (example: sand edges):



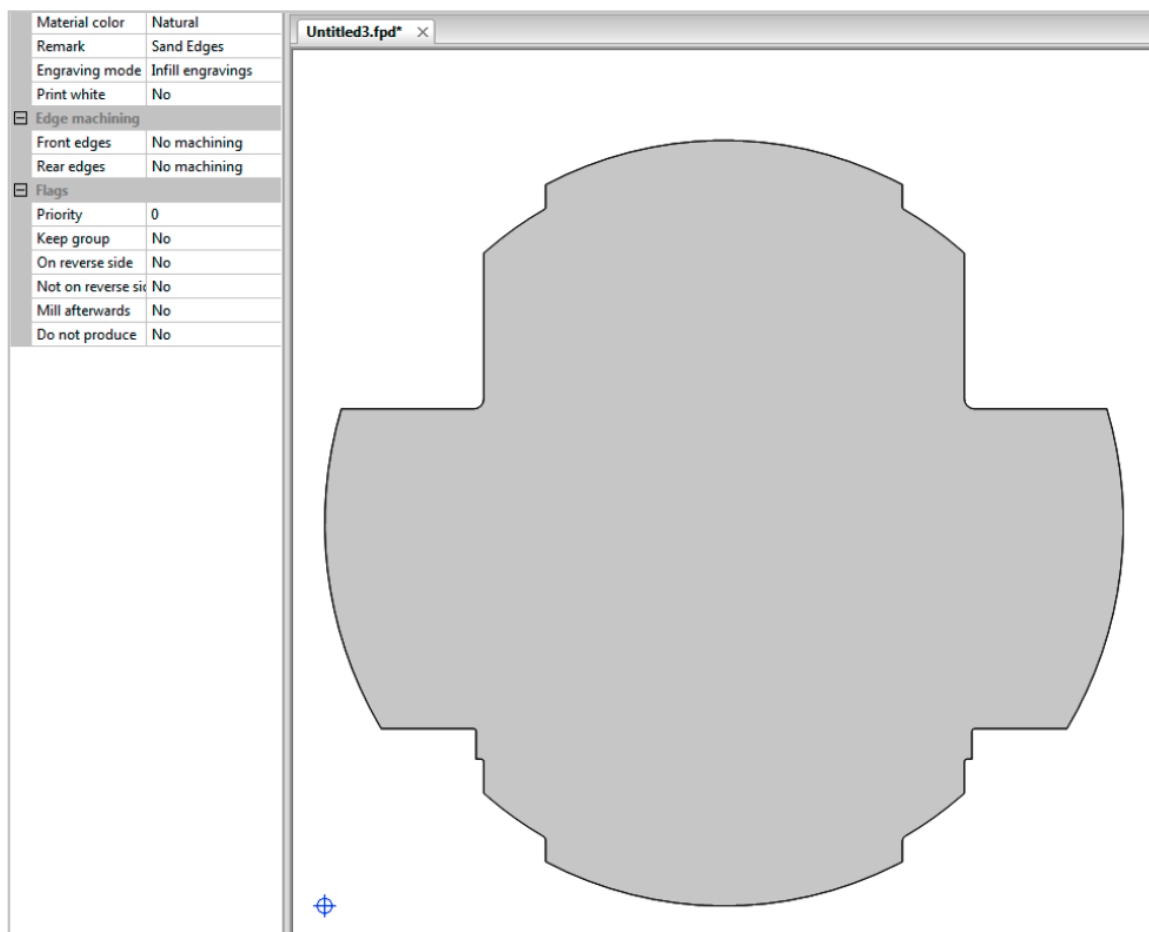
Remarks for production:

Sand Edges

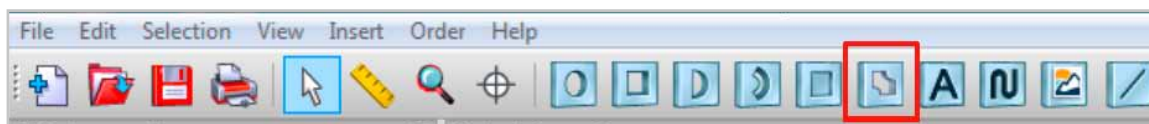
face

OK Cancel Help

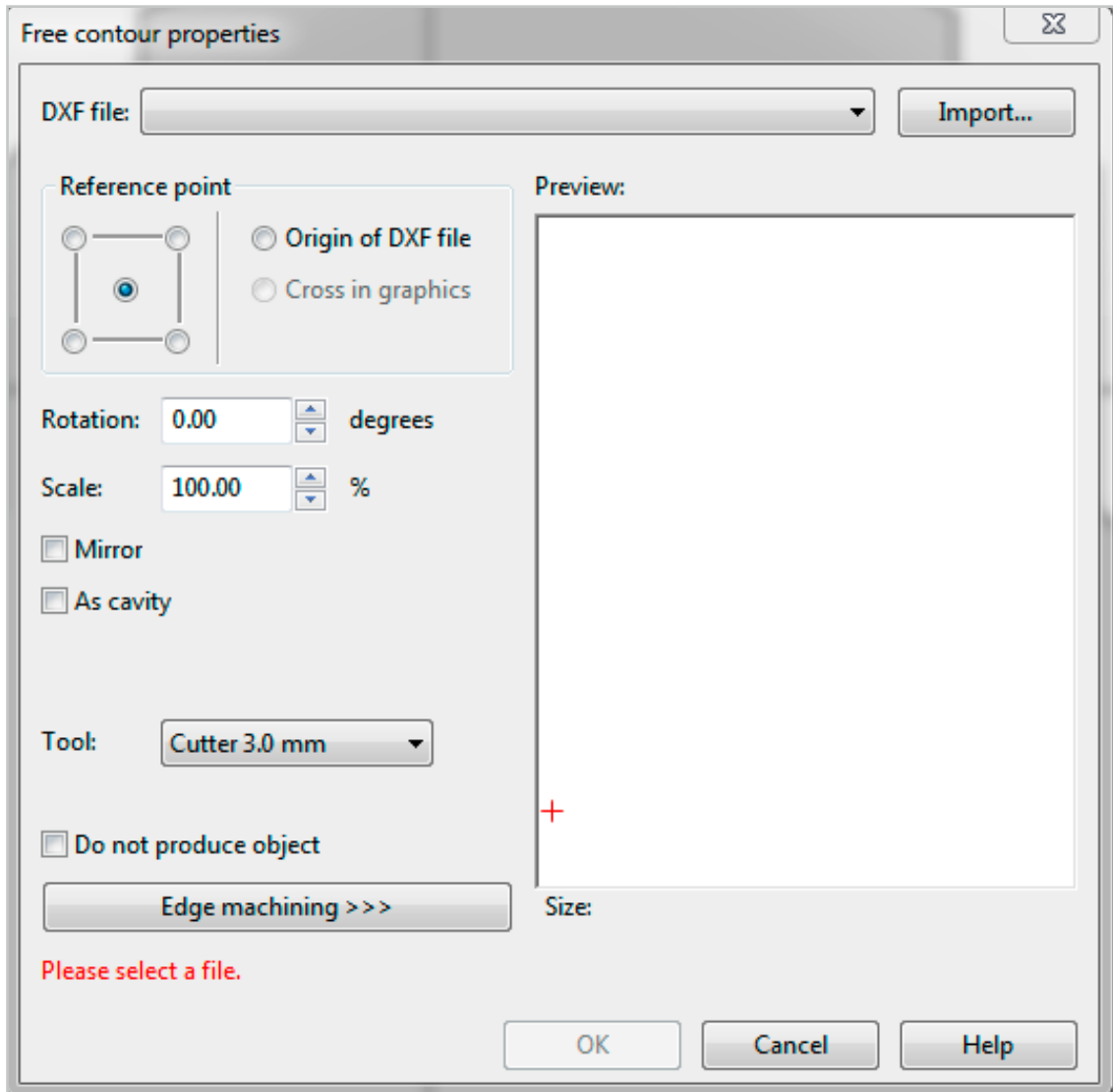
9) Click ok and the panel will appear on the screen:



10) To add cutouts select the ,Insert Free contour' button at the top of the screen:



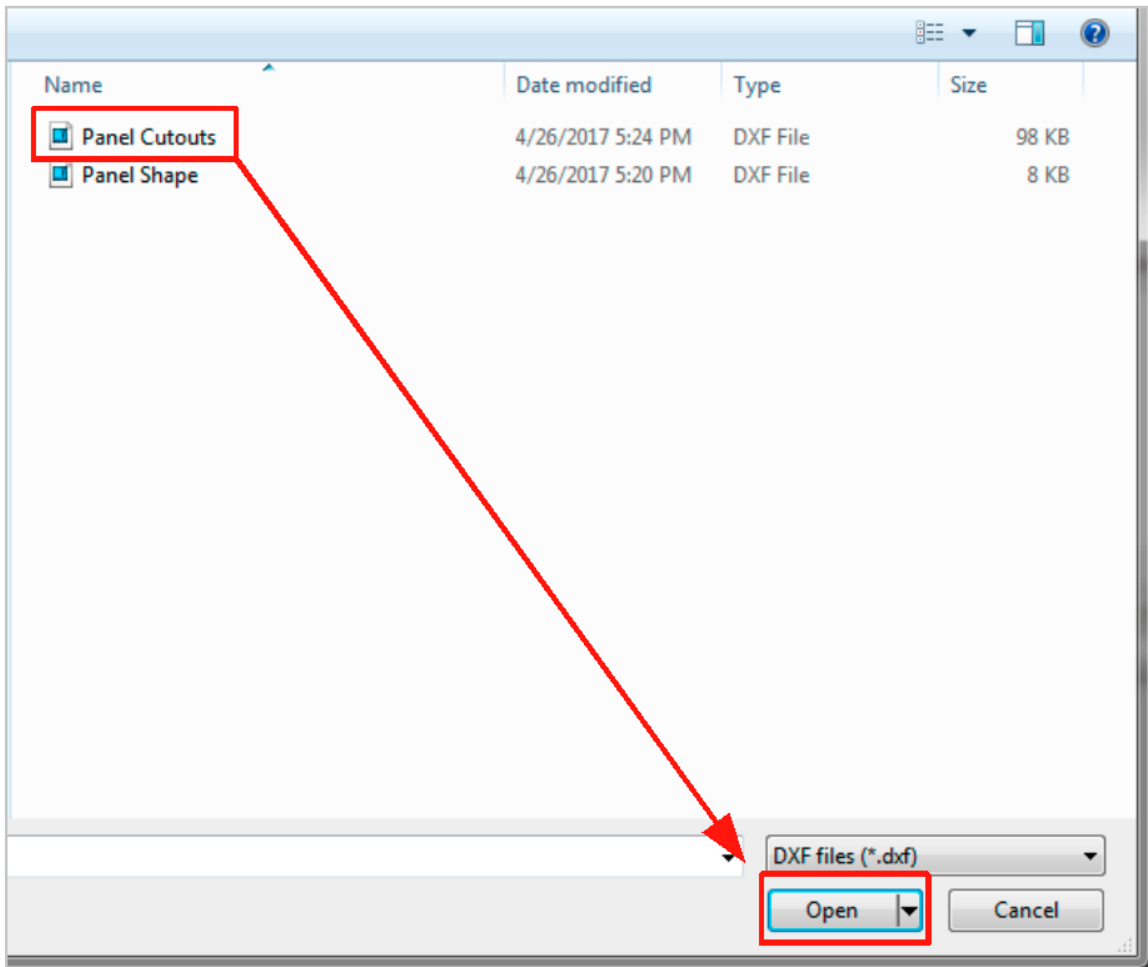
11) Once selected click on the panel and the following screen will appear:



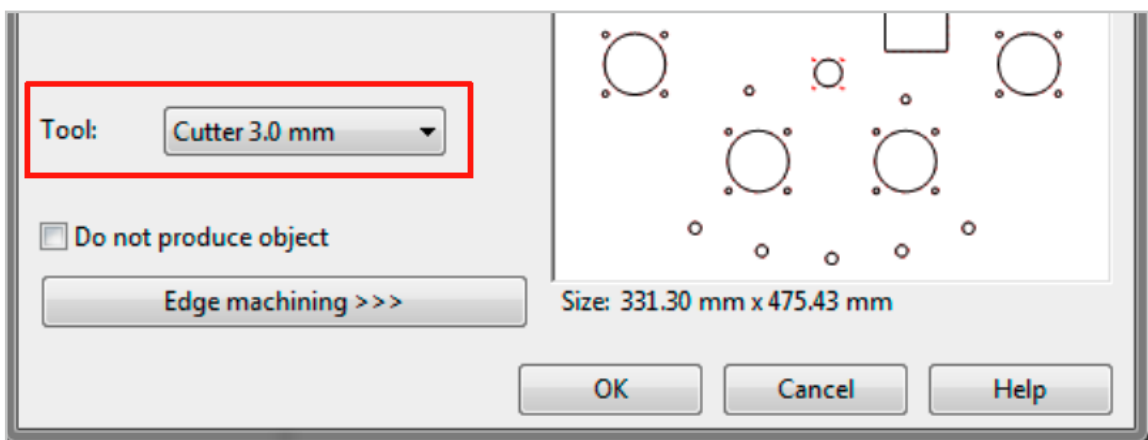
12) Click ,Import'



13) Select the desired DXF cutouts file and click ,Open‘

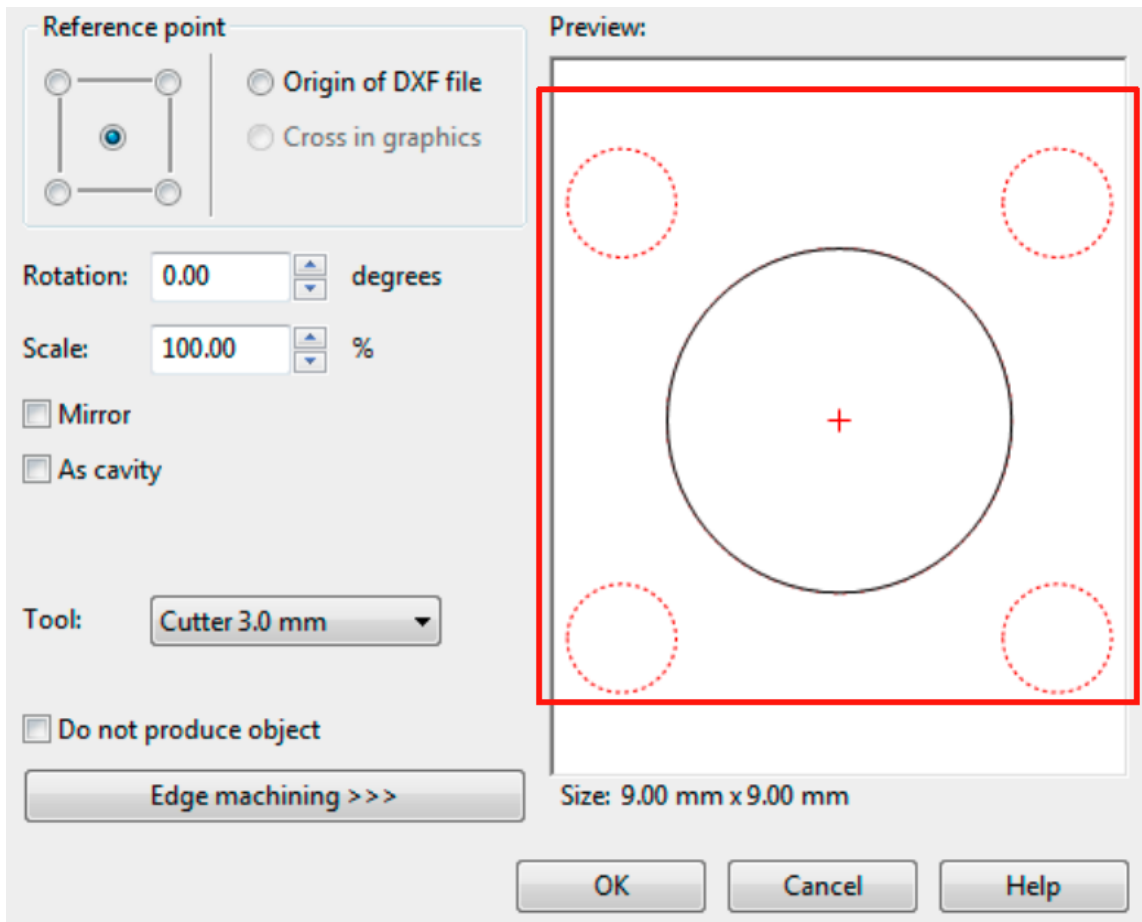


14) Select the largest tool possible to mill the largest cutout. (Example: 3.8mm cutouts require the 3.0 mm cutter tool to be used). System will automatically select the proper tool size for all smaller cutouts after they have been imported.

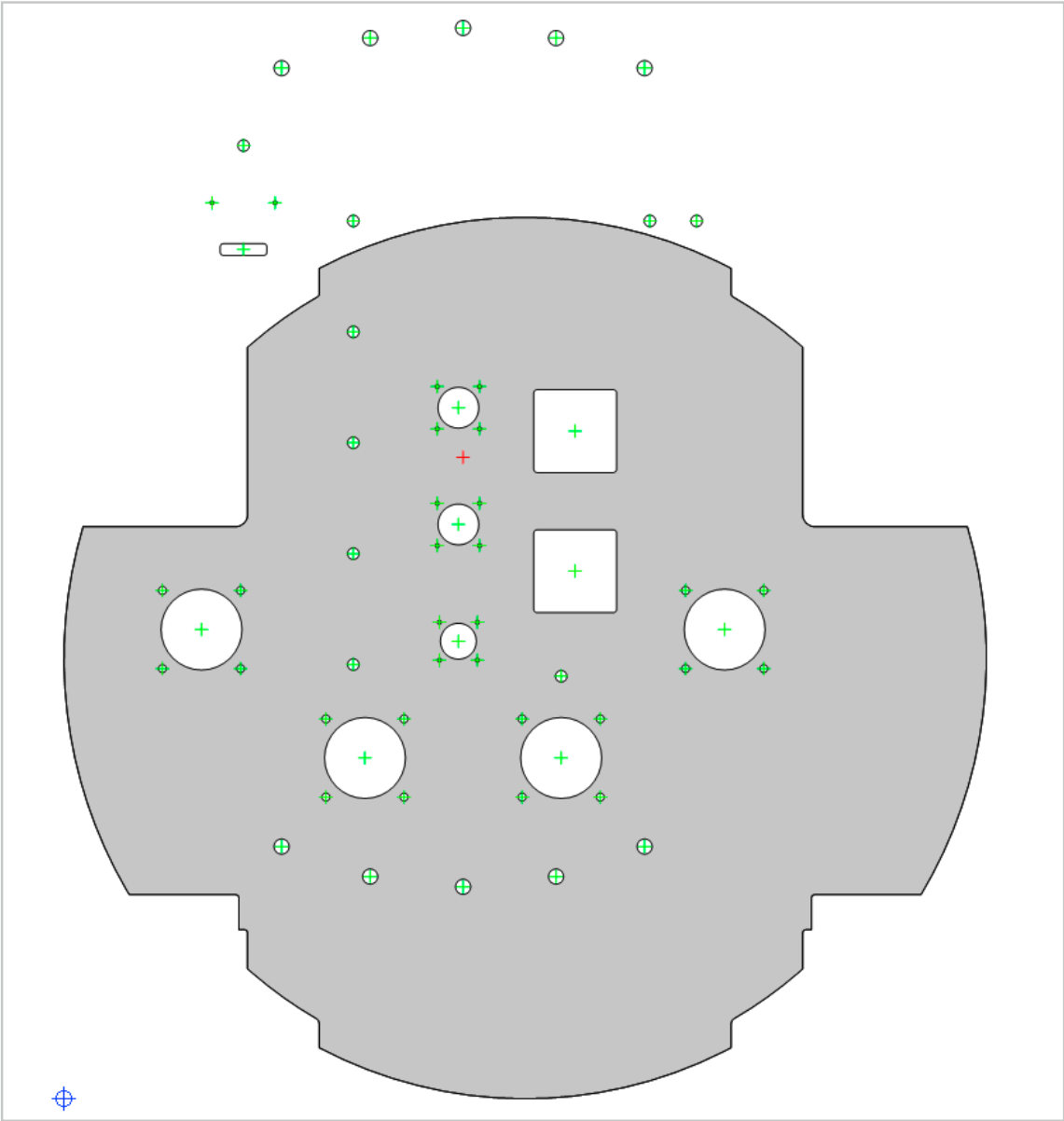


DXF IMPORT GUIDE

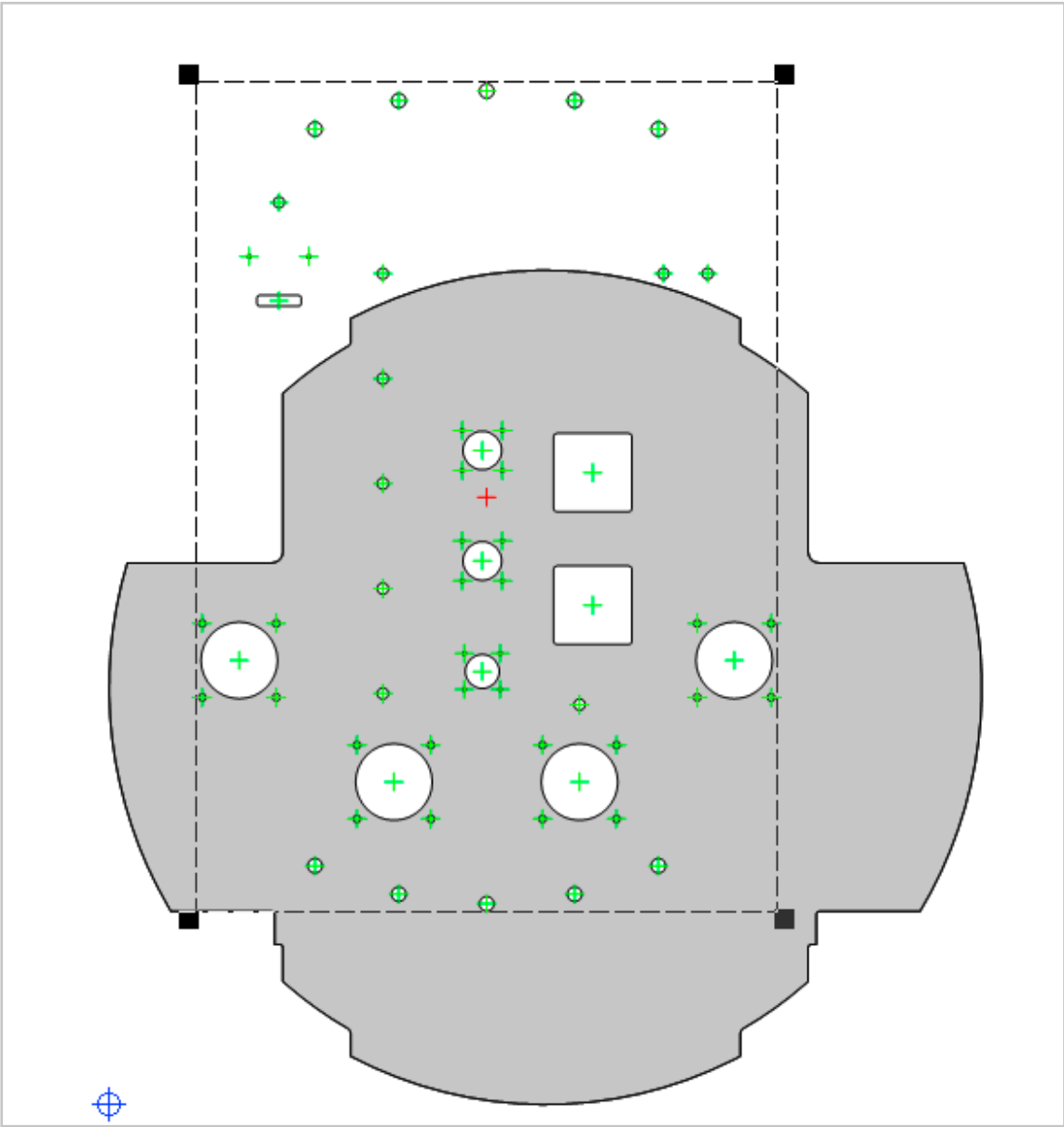
Example: Below you can see the cutouts in red that are not able to be milled by the 3.0mm tool. By choosing the 3.0mm tool and selecting ,OK' the system will automatically assign the proper tool for those cutouts.



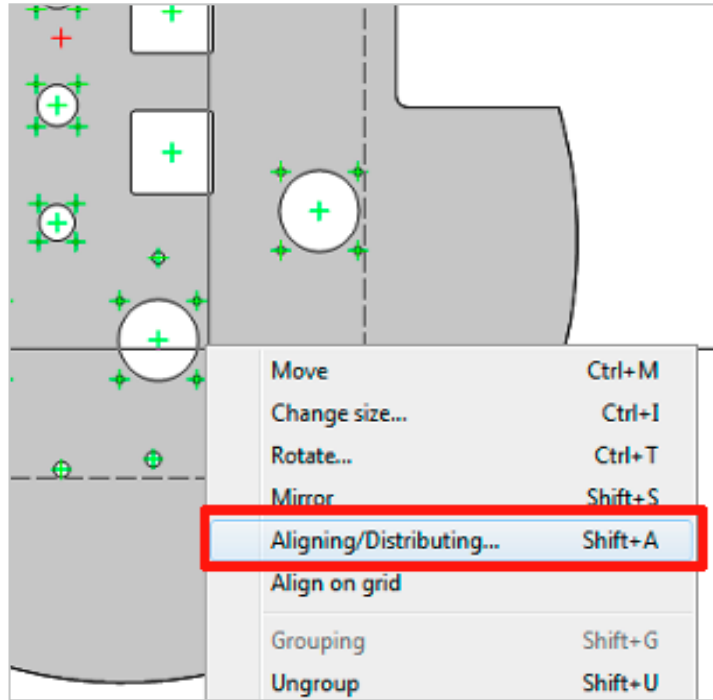
15) Click ,ok' and cutouts will be on the panel:



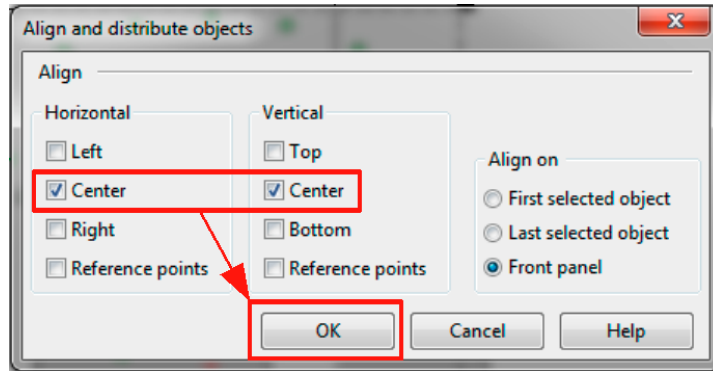
16) To center the cutouts on the panel select all cutouts



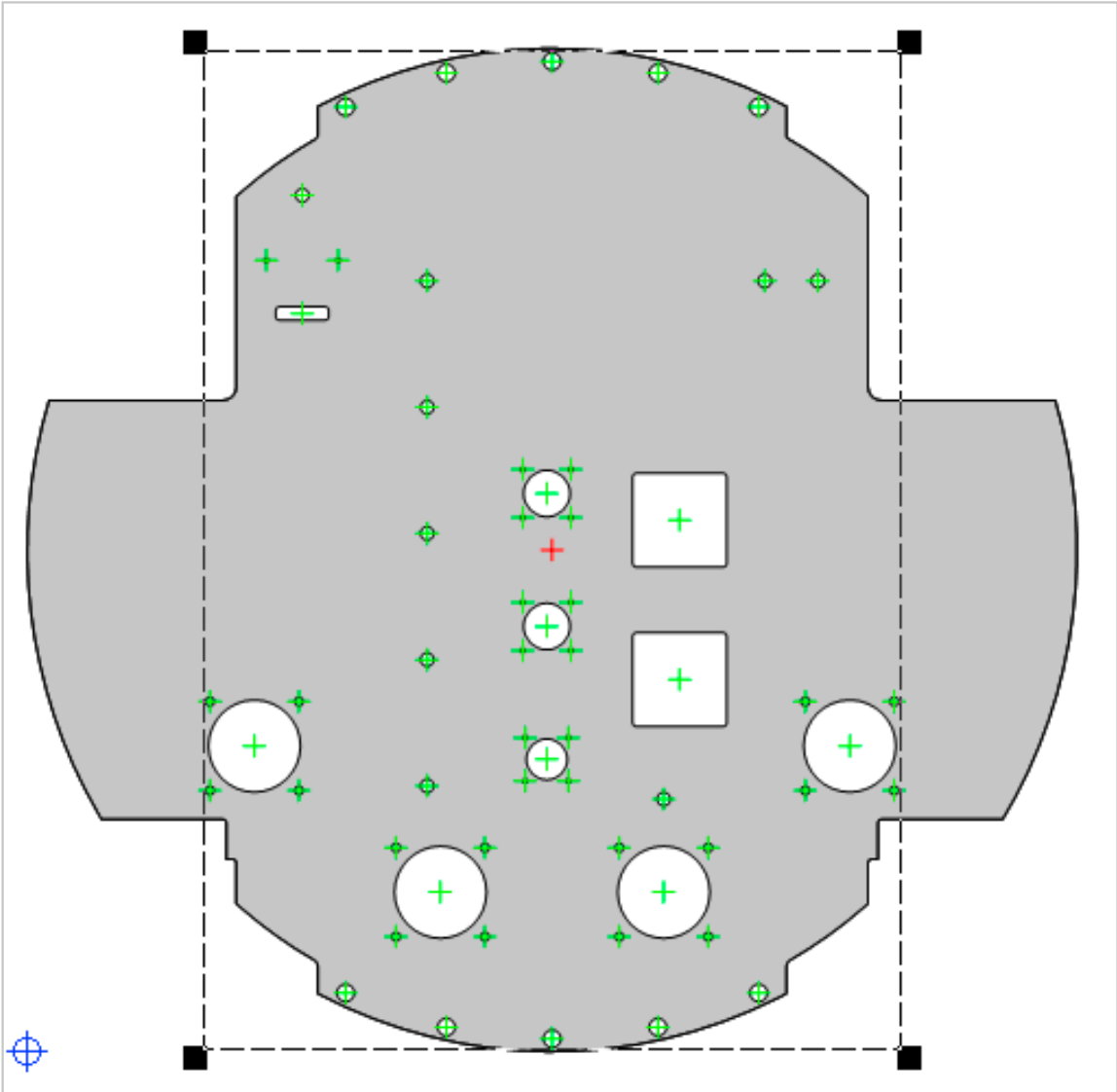
17) Right click on the cutouts and click ,Align and Distributing‘



18) Under ,Horizontal‘ check the box ,Center‘ and under ,Vertical‘ check the box ,Center‘ then click ,ok‘



19) Cutouts will be centered on the panel:



20) The DXFs have now been imported onto the panel. Complete the panel as needed and save.